



# HOW TO

## Hang a door

### CONTACT US

#### HEAD OFFICE:

230 15th Avenue, Riviera, Pretoria

Tel: +27 12 356 9500

#### STORES:

Centurion Megastore: +27 12 653 9600, Montana Megastore: +27 12 523 0400,

Randburg: +27 11 699 7560, Riviera: +27 12 356 9500, Silver Lakes Megastore: +27 12 809 9900,

Waltloo: +27 12 803 5158, Waterkloof Glen: +27 12 998 5074

Please note: information in this brochure is FH Chamberlain's opinion and we do not warrant the accuracy or completeness of that information. FH Chamberlain excludes all liability in relation to the statements in this booklet.

[www.chamberlain.co.za](http://www.chamberlain.co.za)



**FAMOUS FOR HARDWARE** since 1903

*Printed on Sappi Camelot - fully recyclable*

**FAMOUS FOR HARDWARE** since 1903

## PREPARATION

### Trim

Measure the diagonals of the door frame to assess whether the opening is square, and whether trimming is necessary. Ideally there should be a maximum 5mm clearance at the bottom, and a 3mm clearance on either side and the top. Trimming to fit the frame is usually necessary. At most trim off 10mm, limited to 5mm per side\* – trim evenly on the top, bottom and on both vertical sides. Remember to allow for lock installation. To reduce the height of framed or panel doors, a maximum of 25mm\*\* may be trimmed off the bottom of the door only.

*\*Trimming specifications differ due to different door construction. Please check the door manufacturer's trimming specifications before trimming. \*\* Maximum trimming based on door construction.*

### Treat

Once the door has been trimmed to fit the door frame, treat thoroughly before hanging. Proper treatment of wooden doors is essential in our harsh climate. Doors have six sides - paint or seal the top and bottom edges where moisture movement is highest, both vertical sides, and any other areas where end grain is exposed. Treat with a suitable preservative such as an undercoat, PVA, enamel, oil based sealant or varnish, and ask for advice if you are unsure which product you need. When painting or varnishing, the panels should be able to move freely – make sure they do not adhere to the framework of the door. For glazed doors the rebates and glazing beads (the strip surrounding the glass pane which holds it in place) must be painted prior to fitting the glass, and putty should be used between the glass pane and the rebate wall, and the glass pane and the glazing bead.

Door panels must be free to expand and contract in the door framework as moisture levels change throughout the year - timber is a natural product that responds to temperature and moisture variations.

### Manufacturer guarantees

Manufacturers limit their guarantees to the value of the door. Some manufacture to SABS standards and some don't. Incorrect treatment before, during or after installation; incorrect choice of door; and physical damage after collection can render the guarantee null and void.

## HANGING GUIDE



Once the door has been trimmed and treated, fit the door into the door frame and wedge it into position.



Mark the hinge positions on the door edge with a pencil. Remove the door and extend the marks onto the door edge, or door frame if necessary.



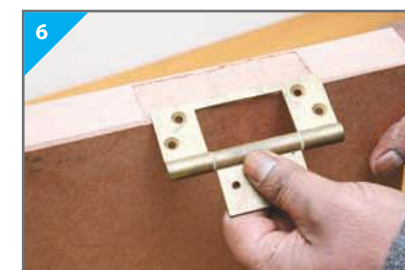
Trace the outline of the hinge on the door and on the jamb with a pencil.



Score the outlines of the hinge with a chisel.



Cut the recess into the door and jamb, making sure that the installed hinge is exactly flush with the edge of the door. The screw holes should be marked with a centre punch and drilled.



Cut out the hinge recesses. To prevent the door binding, make sure that the recesses are slightly deeper on the inside of the frame so that the hinge will not be completely closed when the door is closed. The recesses should be the same depth as the thickness of the hinge from the knuckle of the hinge. The knuckle itself should project from the door frame and door. It is best to mark the depth of the hinges with a marking gauge in order to get the same depth for each of the hinges.



When the hinges have been correctly positioned they can be screwed in tightly.